

This product has been designed to improve both the frequency balance and phase response of the Lowther drivers.

Lowthers are wonderfully fast, articulate and very efficient speakers that have gained popularity with the rising SET cult around the world. Their splendor does not come without a price however, because you also get to spend lots of time tweaking the upper midrange. There is even a name for it, "the Lowther shout".

To install a crossover on a Lowther to flatten out its response would defeat the entire reason for owning one. A single full range driver with no crossover is the most coherent of all known speaker ideals.

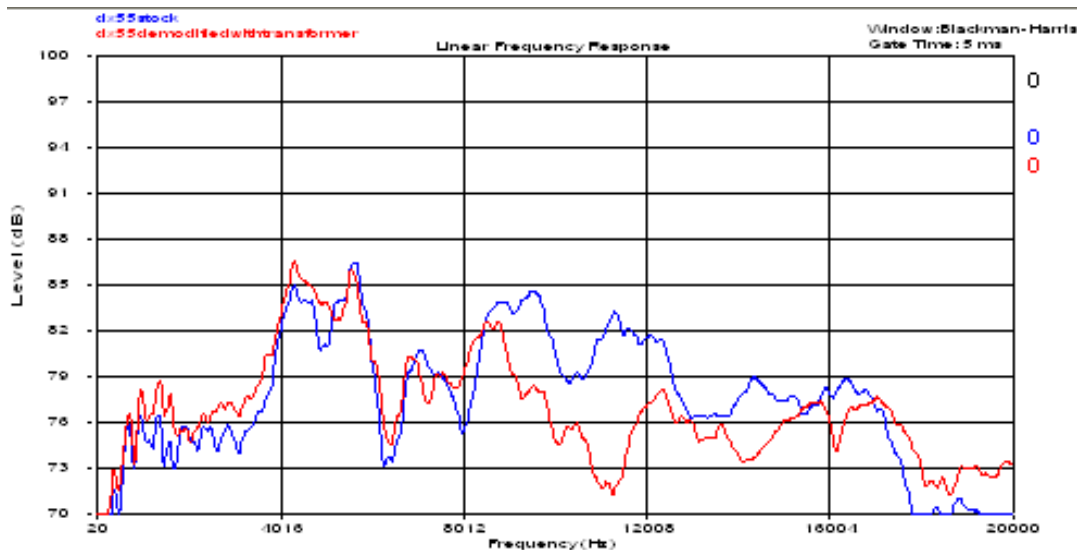
Having heard many Lowthers in a variety of different cabinets and rooms and with various amplifiers I recognized great potential in their sound, but was always bothered three things:

- 1 They usually sounded a bit thin and could also be dry.
- 2 There was a peak in the midrange and lower treble.
- 3 You had to push them to get the best sound.

Out of my own frustration with being teased by my first pair of DX55's I came up with a device that to my ears makes a profound improvement in the sound of Lowther drivers.



Steve Deckert



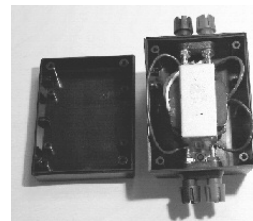
The Blue line is a stock Lowther DX55

The Red line is the same unit modified with the "Gizmo"

To see all the graphs and read the complete white papers visit

www.decware.com

\$199.00 a pair
30 day money back!



What is it? How does it work?

Gizmo shown for one channel

IMPEDANCE / PHASE CORRECTION DEVICE

The "Gizmo" is a special air-gapped transformer wound on a top quality Grain Oriented Silicon Steel Core with a low impedance primary connected in series with the Lowther driver somewhere between your amplifier and the loudspeaker. It uses a high impedance secondary shorted across a variable Alps potentiometer. This esoterically dampens the primary altering the frequency balance and timbre of the speaker and is fully adjustable!

This device actually enhances and extends bass response and enhances and extends the high frequency response as well. Cymbals sound real for the first time, dynamics also seem to improve. It also corrects the problem of having to play the speakers loud to get the best sound and of course fixes that midrange!

The frequency response chart below illustrates an impressive improvement, but really doesn't begin to show what this device actually does to the sound! It certainly will make those Lowthers worth what you paid for them and then some.